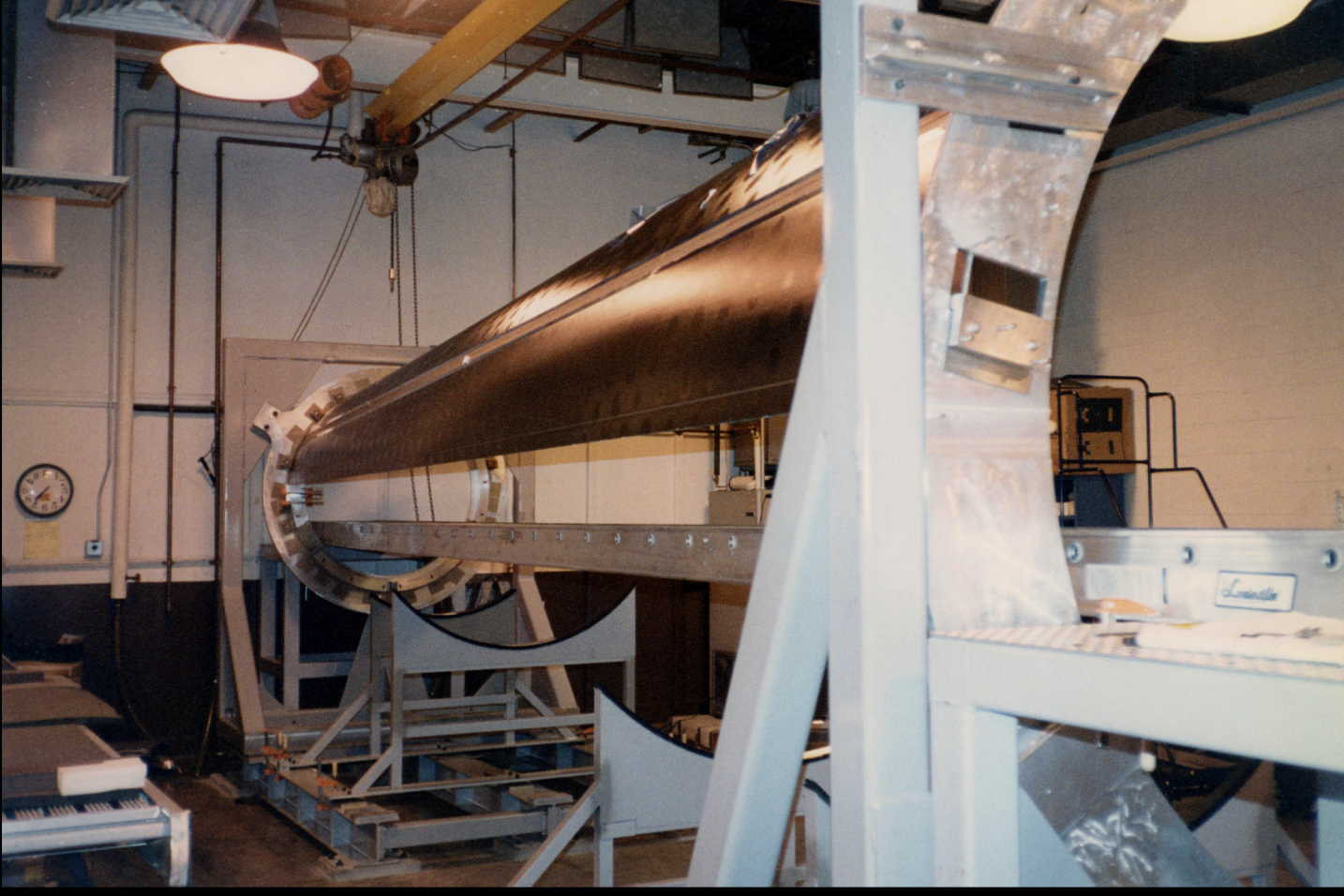


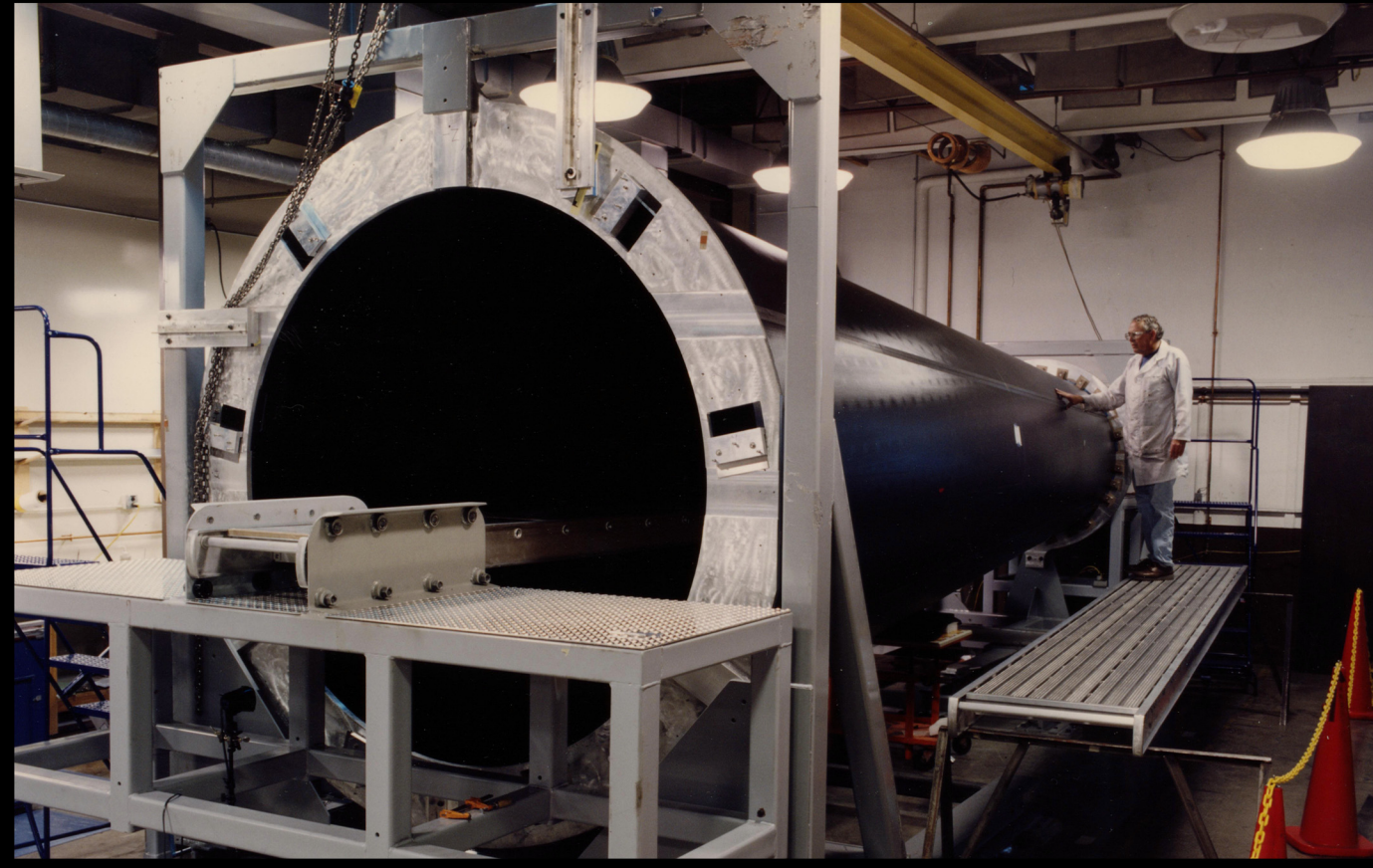
# The Optical Bench: The Backbone of the Chandra Observatory

Cliff Olds (ITT), Rob Reese (ITT), Mike Godard (ITT)

Optical Bench during initial assembly at ITT



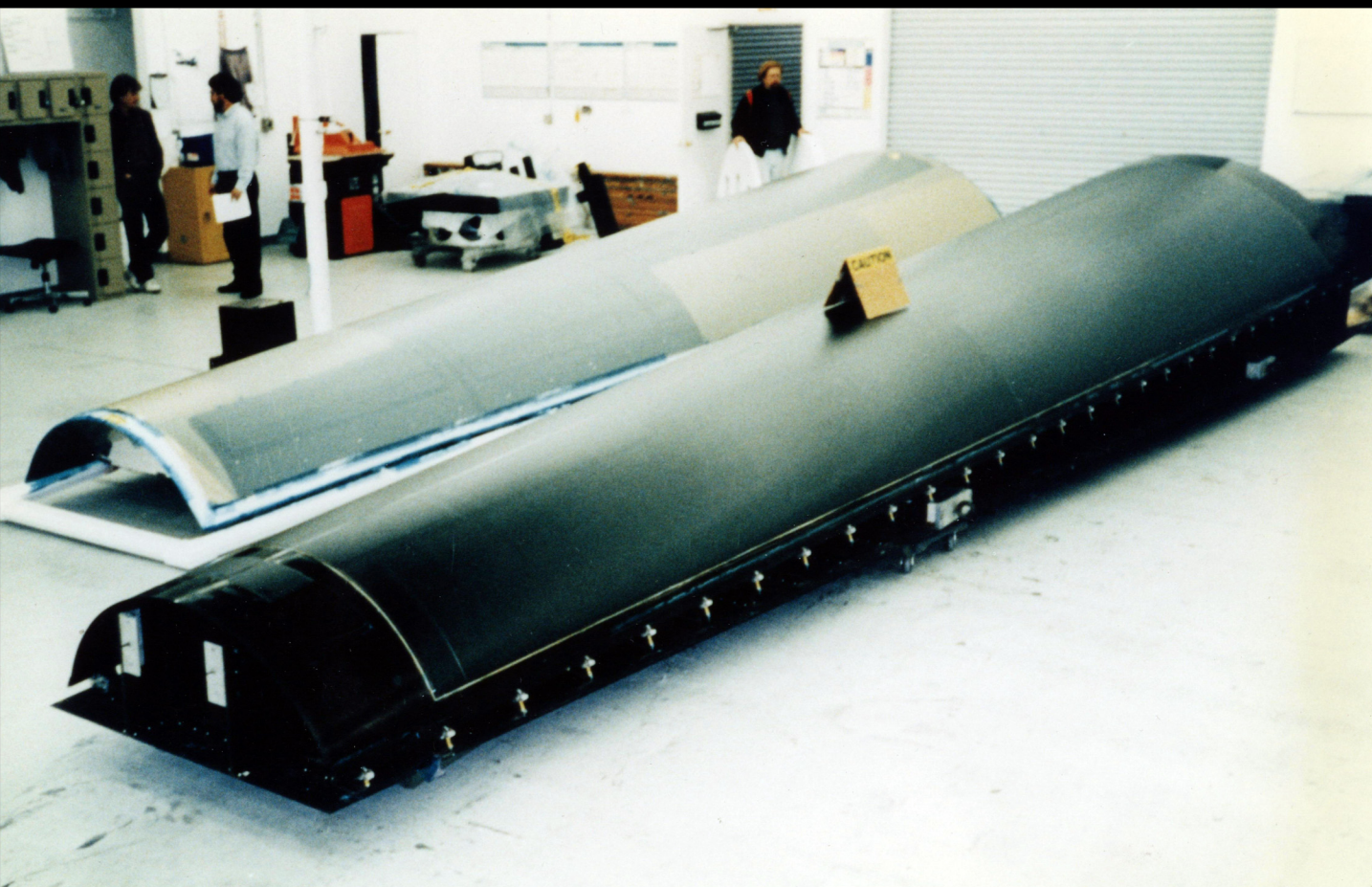
In-Process Assembly of the  
Optical Bench Assembly (OBA)



Completed Optical Bench Structure



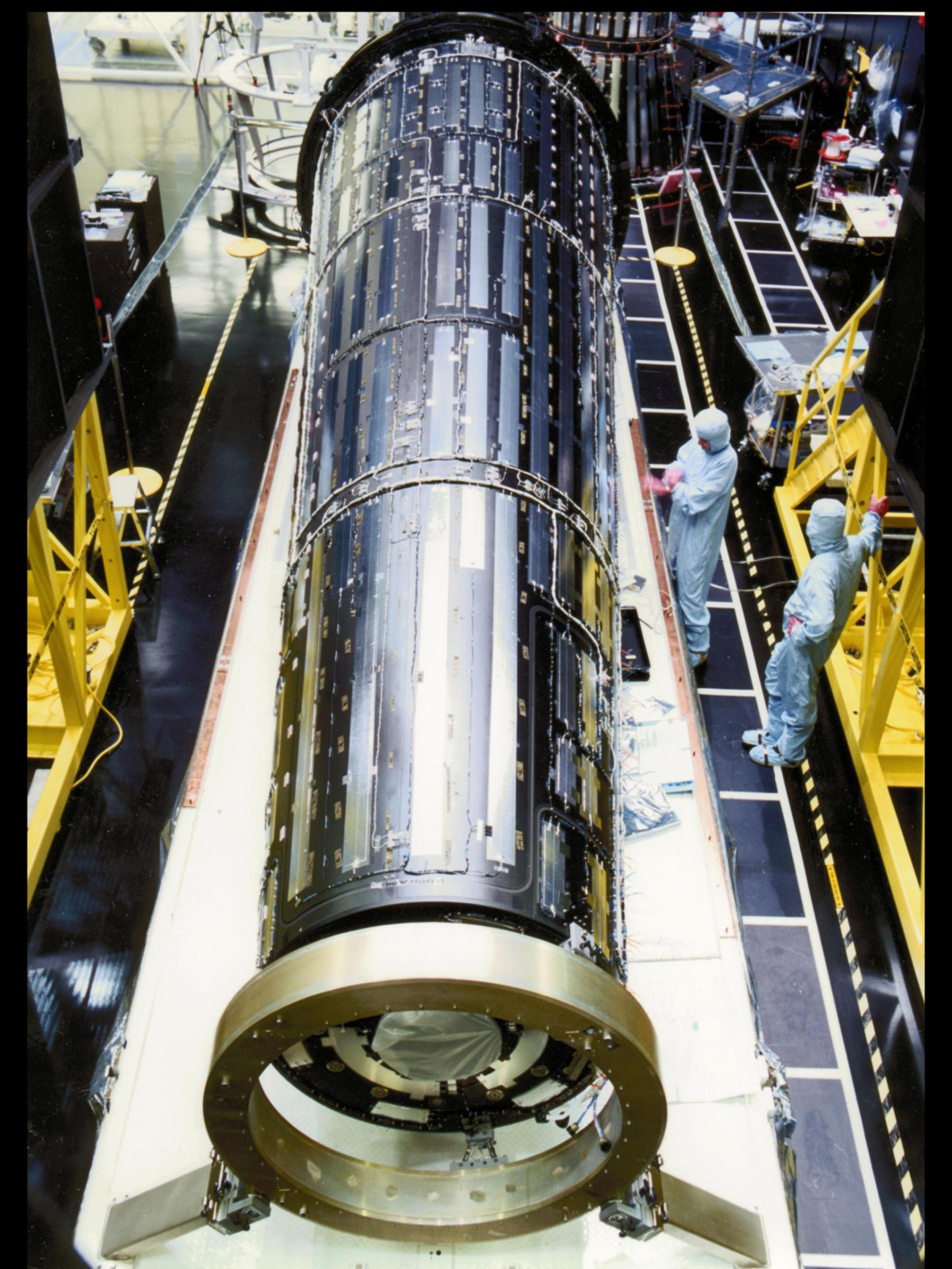
Optical Bench during initial assembly at ITT



Structure being prepared for Static  
Load Test in Handling Fixture

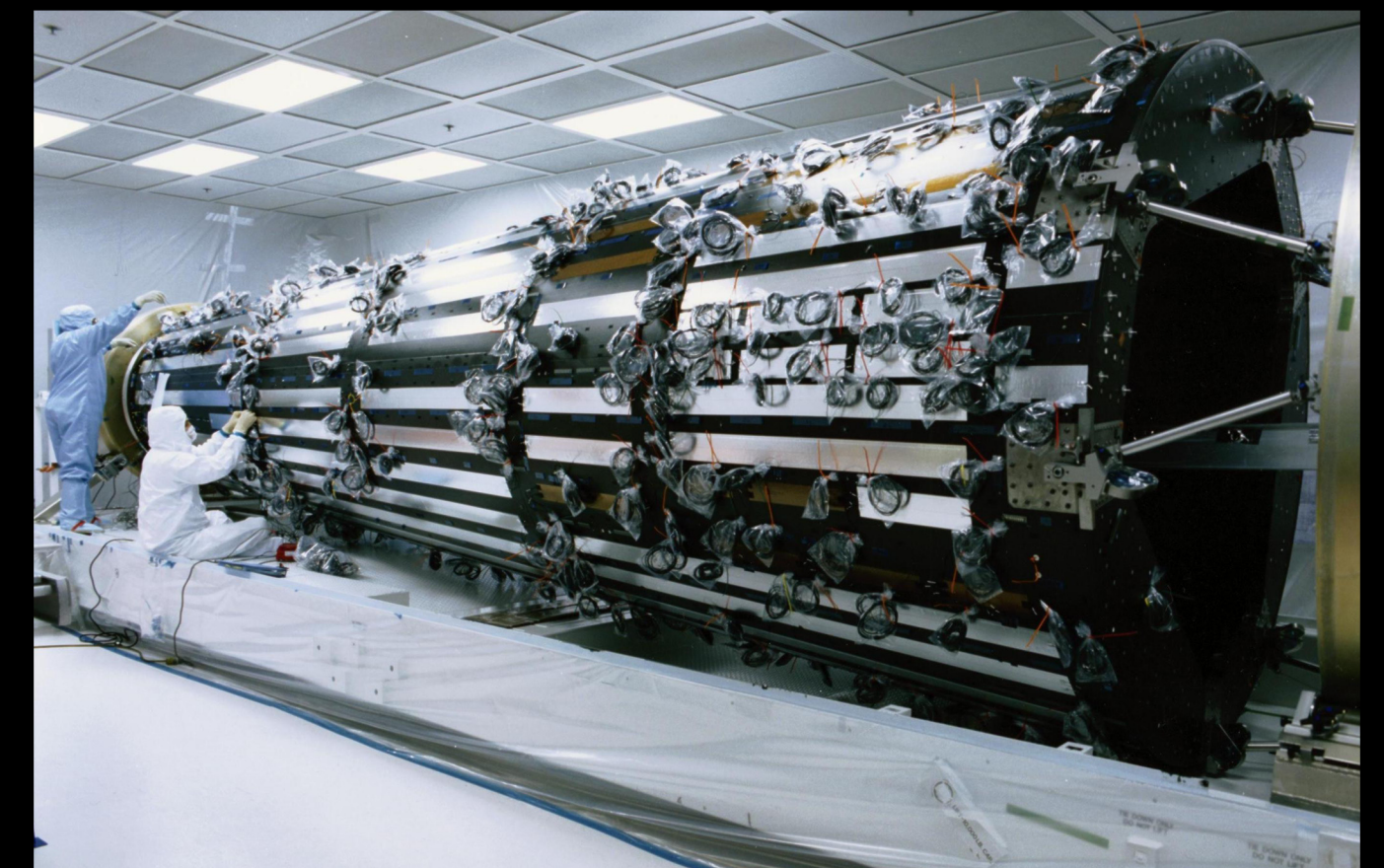
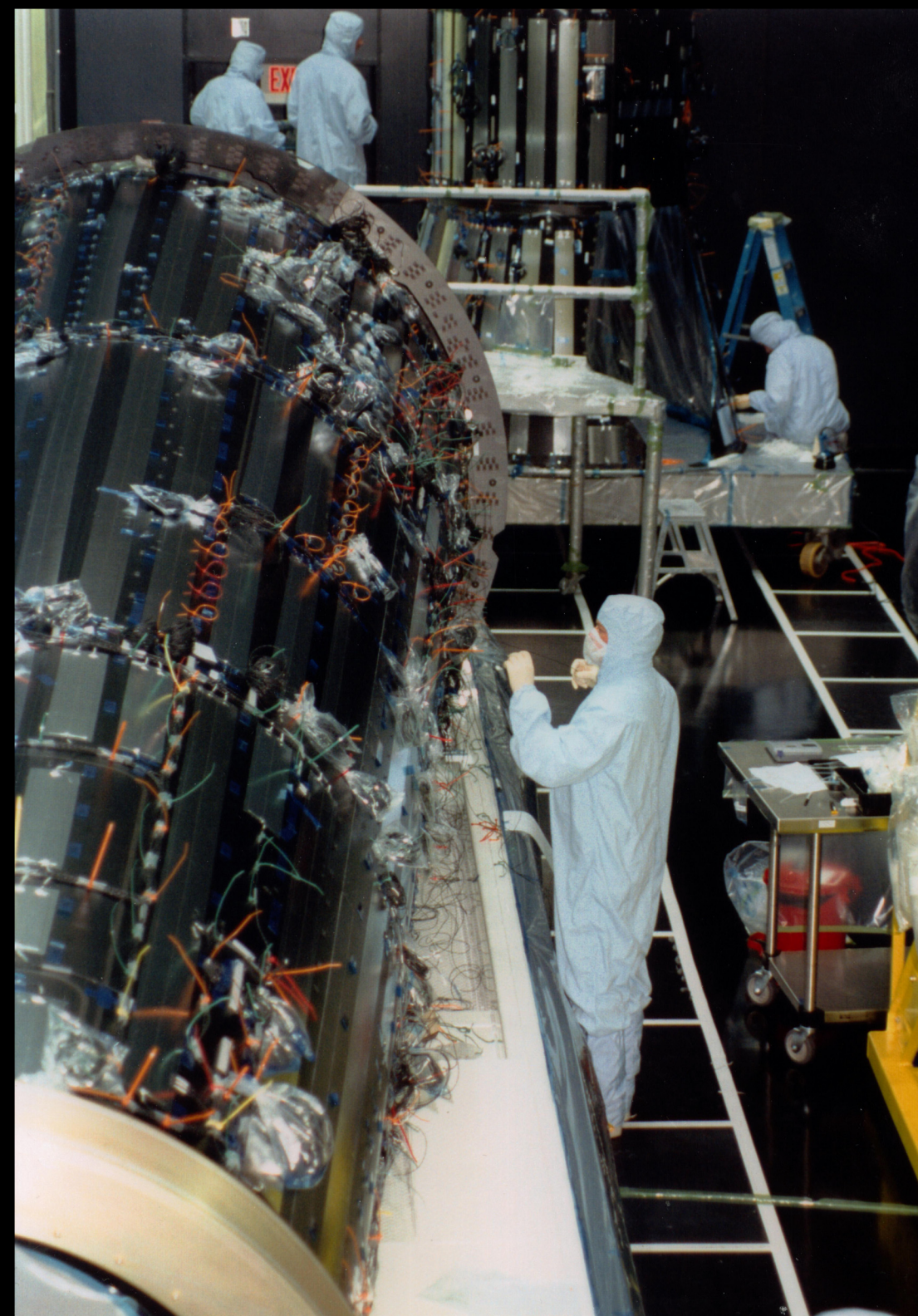


OBA during electrical  
assembly operations



Optical  
Bench  
Structure during  
Static Load  
Testing at ITT

Completed OBA with blankets installed  
being prepared for HRMA integration  
at NGAS



OBA/HRMA  
integration  
at NGAS



The Chandra Optical Bench is the largest  
composite structure ever launched  
on the Space Shuttle or flown by NASA